

Why Do Cattle Love CalPac?



Mineral Balance Makes Money

What do animals need to perform?	ENERGY + PROTEIN + MINERALS		
Where does this come from?	↓ Plant Carbon & Sugars	↓ Legumes	↓ Soil Content
What triggers it?	↓ Phosphorus	↓ Nitrogen & Sulphur	↓ Calcium

When soils are lacking... **UTILISE THE PLANT**

The Standard Fertiliser Recipe

Super Phosphate

Based on
P replacement

Urea

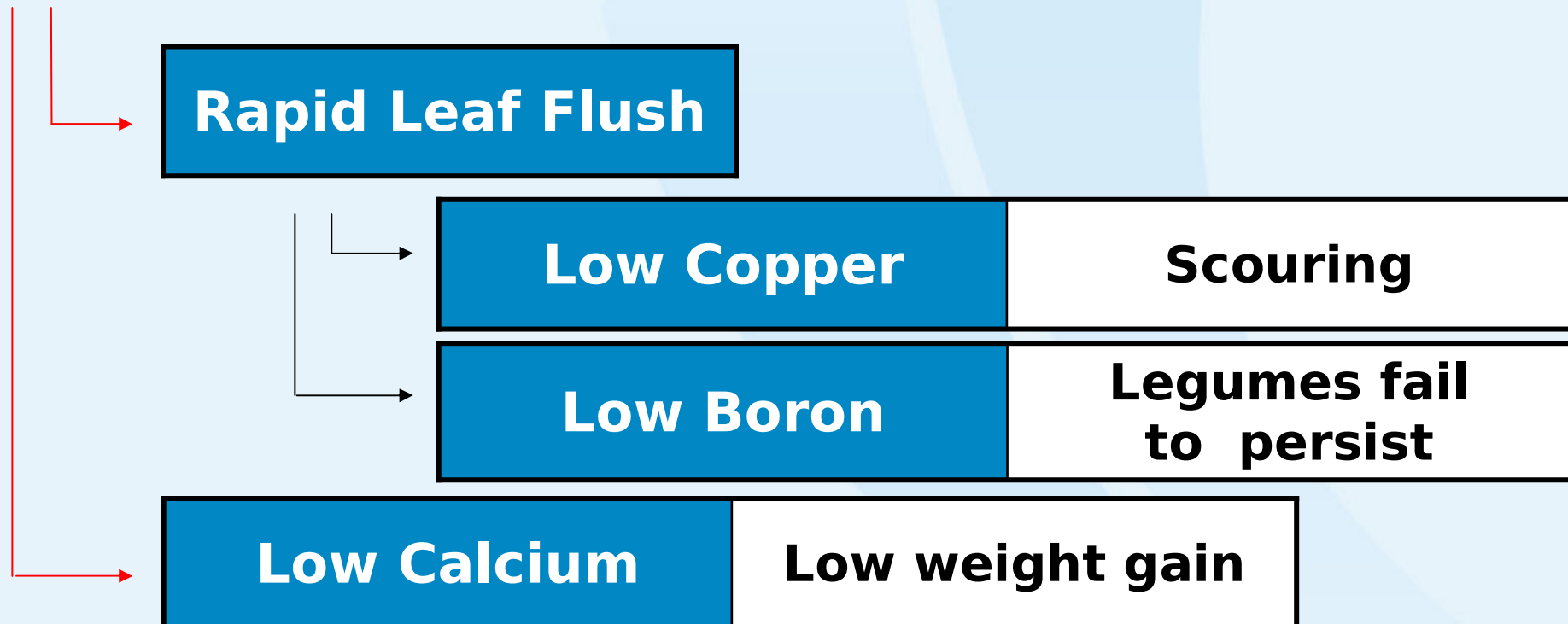
Replaces poor
legume component

Does this balance the minerals in the soil?

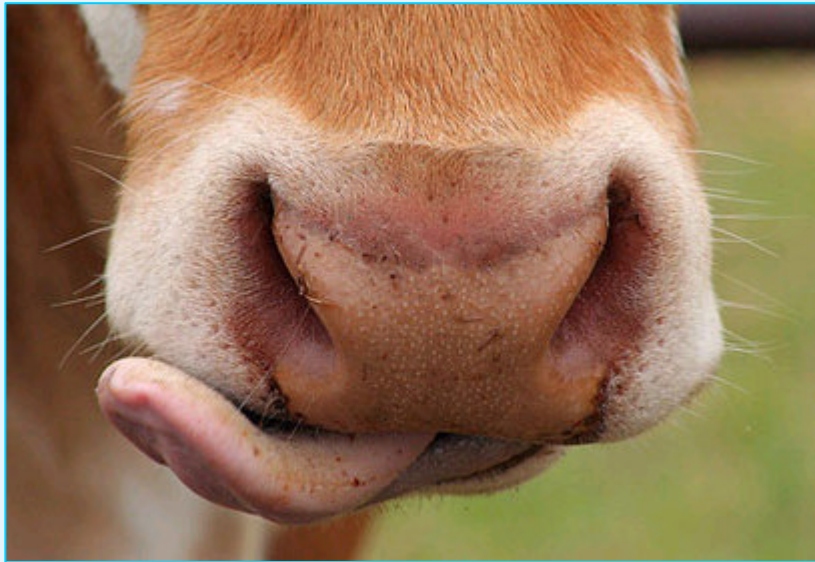
NO! What happens then...

What happens with high N?

Excess Nitrate



What Is The Answer?



Apply CalPac!

Cattle Love CalPac & You Will Too

Straight from the Cows Mouth

Why **Cattle** Love CalPac:

- ✓ **Raises plant sugar levels so plants are more palatable**
- ✓ **Provides more minerals per chew so gives a better weight gain potential**



Straight from the Cows Mouth



Why **You'll** Love CalPac:

- ✓ **Helps legumes persist in the paddock in acid soils**
- ✓ **Helps plants hang on in cold weather so pasture resists dormant growth phase longer and comes out sooner**

Straight from the Cows Mouth

More Reasons Why You'll Love CalPac:

- ✓ **Offers fast Calcium uptake – no waiting for lime to breakdown**
- ✓ **Experience in the paddock shows 100% return on investment**



Application Rates

Pasture

Foliar	After hard grazing	15L/ha
	Day 7-14 after cutting or grazing	

Lucerne Hay

Foliar or Fertigation	7 days after hard grazing or cutting	15L/ha initial application
	Immediately after cutting	8L/ha per irrigation

**To order CalPac call
head office on (07) 4671 5811**

**The
End**

